

Why won't my CD eject after formatting it with Direct CD?

After formatting the CD and even after copying or accessing it again, you will have to eject the CD and tell it how you want to use it.

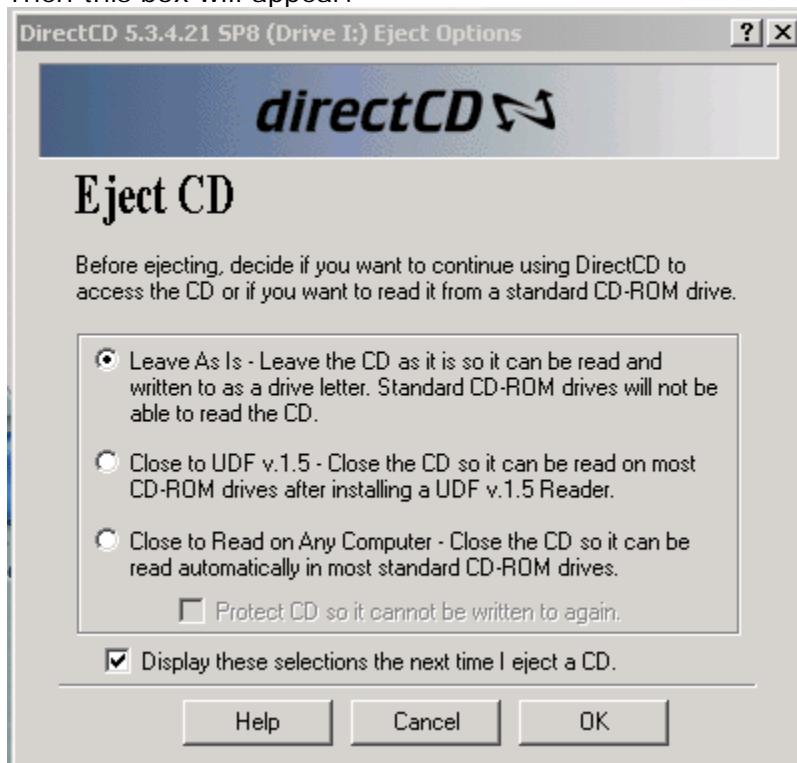
How do I do this?

- Go into **Project Selector**
- Click on **Make a Data CD**
- Click on **Direct CD**
- Click on **Eject**

OR

- Go into **Windows Explorer** or **My Computer**
- Right-click on **CD drive**
- Click **Eject**

Then this box will appear:



- Make a selection and click **OK**.
Note: If you uncheck the box for "Display these selections the next time I eject a CD" and click OK on the box that appears- you won't have to do this again when ejecting a CD. But, if you uncheck and want to change your options you will have to enable this by clicking on Options on DirectCD screen.
- The drive will open and a box will appear and tell you the CD has been ejected- click **OK**.