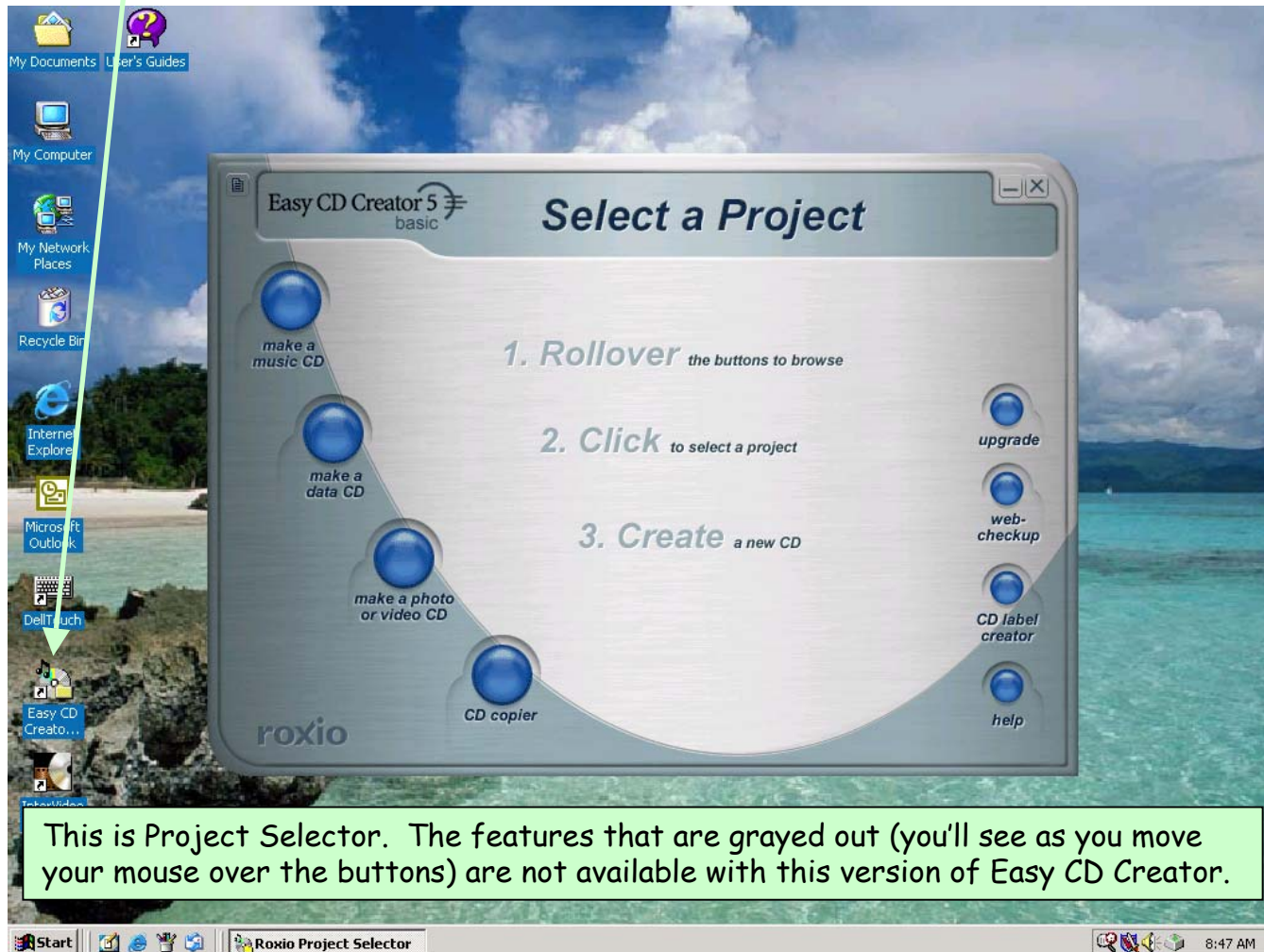
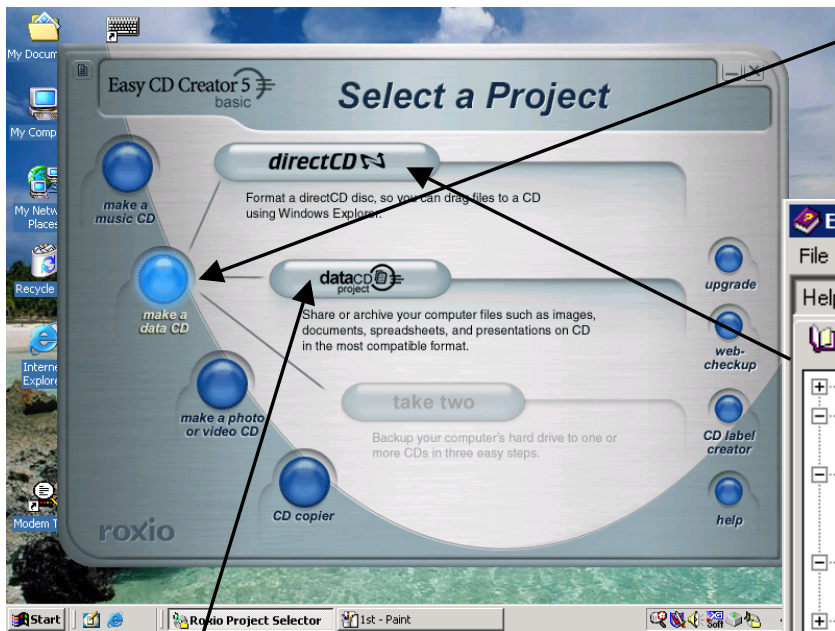


# How to backup with a CD R/W drive

Double-click on Easy CD Creator 5 Basic shortcut on your desktop or go to Start, Programs, Roxio Easy CD Creator 5, Project Selector.

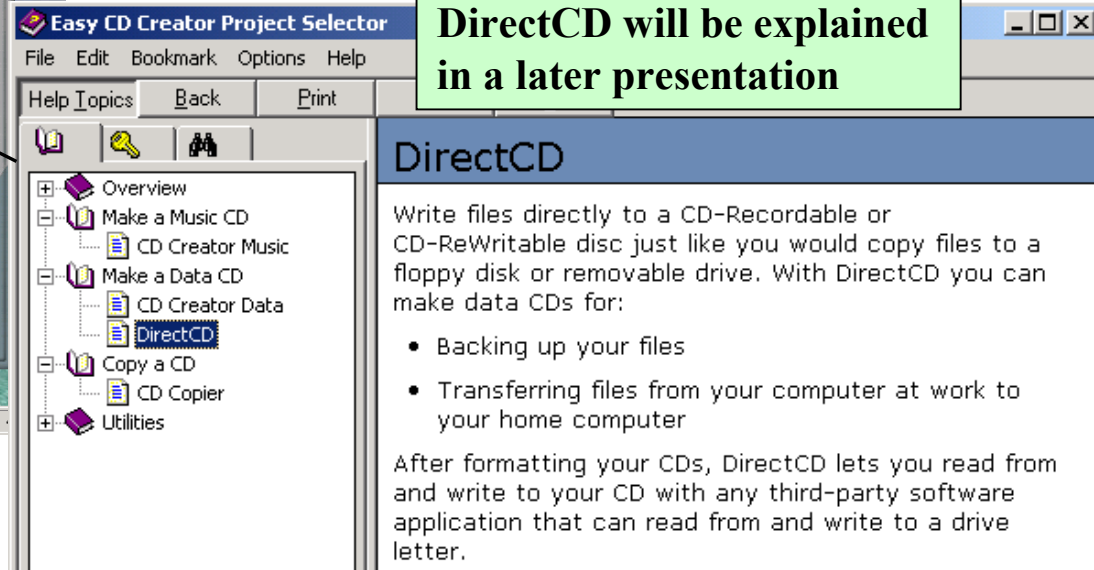


[Click here to go on to next slide](#)



Click on **make a data CD** to see what your options are.

[Click here to create a CD with Easy CD Creator](#)



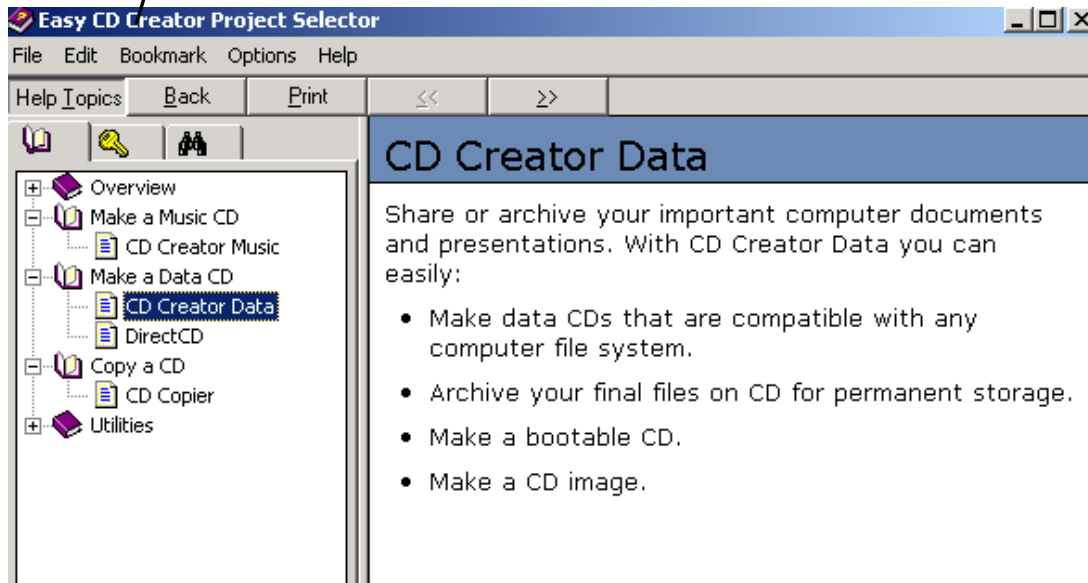
DirectCD will be explained in a later presentation

## DirectCD

Write files directly to a CD-Recordable or CD-ReWritable disc just like you would copy files to a floppy disk or removable drive. With DirectCD you can make data CDs for:

- Backing up your files
- Transferring files from your computer at work to your home computer

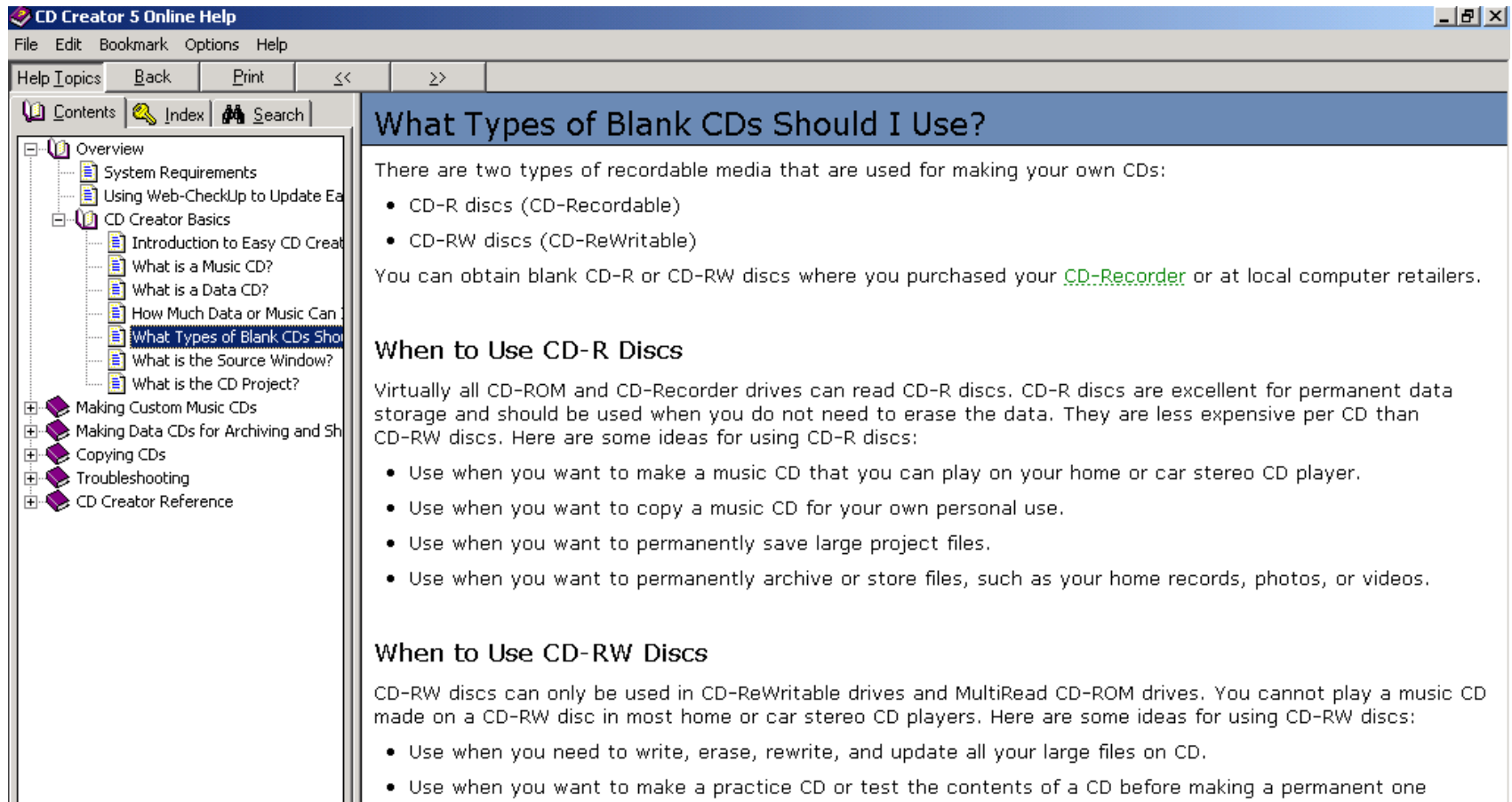
After formatting your CDs, DirectCD lets you read from and write to your CD with any third-party software application that can read from and write to a drive letter.



These are the two methods for backing up

[Click for next slide](#)

# FAQs



The screenshot shows a web browser window titled "CD Creator 5 Online Help". The window has a menu bar with "File", "Edit", "Bookmark", "Options", and "Help". Below the menu bar is a toolbar with "Help Topics", "Back", "Print", and navigation arrows. A "Contents" pane on the left lists various topics, with "What Types of Blank CDs Should I Use?" selected. The main content area displays the title "What Types of Blank CDs Should I Use?" and the following text:

There are two types of recordable media that are used for making your own CDs:

- CD-R discs (CD-Recordable)
- CD-RW discs (CD-ReWritable)

You can obtain blank CD-R or CD-RW discs where you purchased your [CD-Recorder](#) or at local computer retailers.

### When to Use CD-R Discs

Virtually all CD-ROM and CD-Recorder drives can read CD-R discs. CD-R discs are excellent for permanent data storage and should be used when you do not need to erase the data. They are less expensive per CD than CD-RW discs. Here are some ideas for using CD-R discs:

- Use when you want to make a music CD that you can play on your home or car stereo CD player.
- Use when you want to copy a music CD for your own personal use.
- Use when you want to permanently save large project files.
- Use when you want to permanently archive or store files, such as your home records, photos, or videos.

### When to Use CD-RW Discs

CD-RW discs can only be used in CD-ReWritable drives and MultiRead CD-ROM drives. You cannot play a music CD made on a CD-RW disc in most home or car stereo CD players. Here are some ideas for using CD-RW discs:

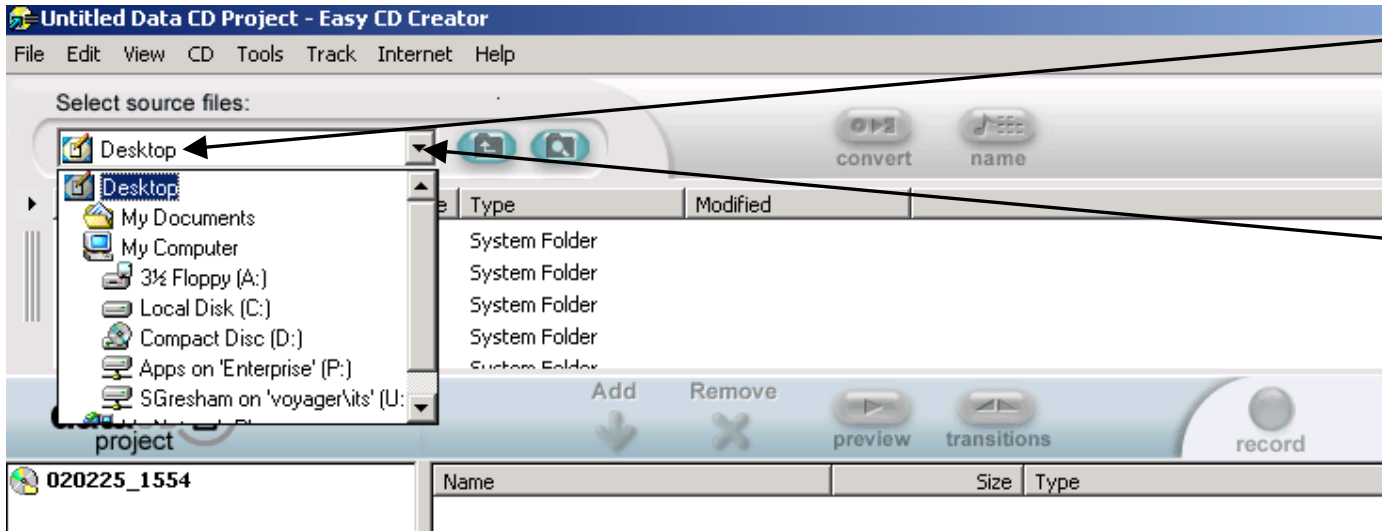
- Use when you need to write, erase, rewrite, and update all your large files on CD.
- Use when you want to make a practice CD or test the contents of a CD before making a permanent one

**Lynne stocks CD Read/Write and CD Recordables in Supply- just submit a requisition.**

[Click for next slide](#)

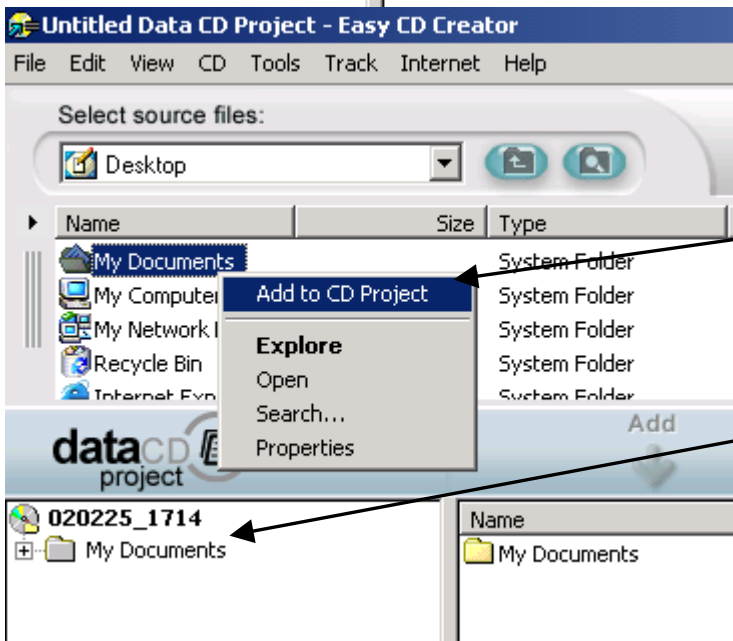
# Easy CD Creator

[How do I get here?](#)



As a default it shows the C: drive

1. Click the drop down box to find **Desktop**



2. Right-click on **My Documents** and select **Add to CD Project**

This adds **My Documents** onto the CD project.

[Click for next steps](#)

At the bottom of the screen it shows the Project Size and space left on the CD.

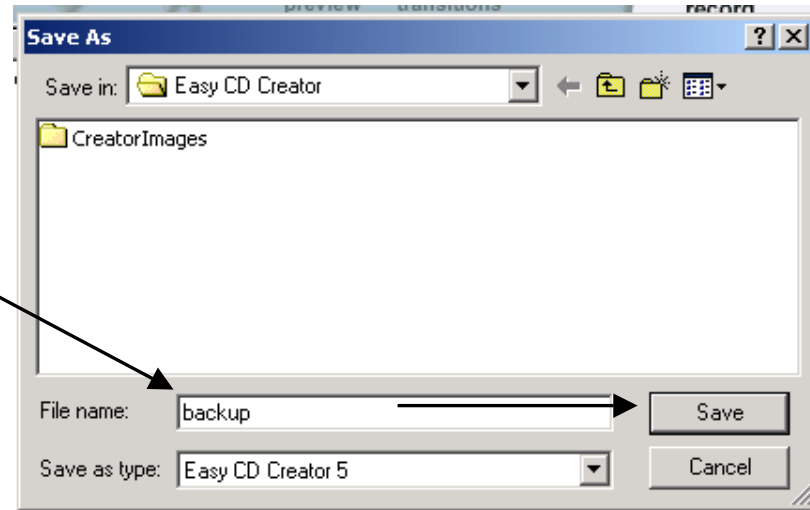
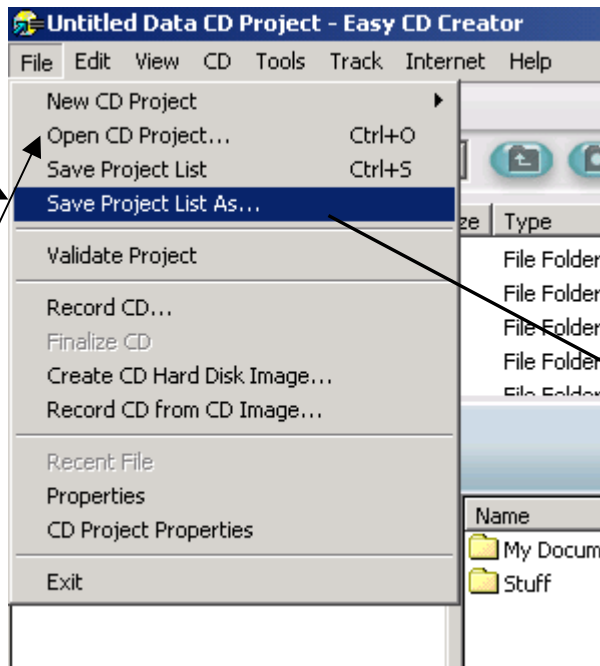
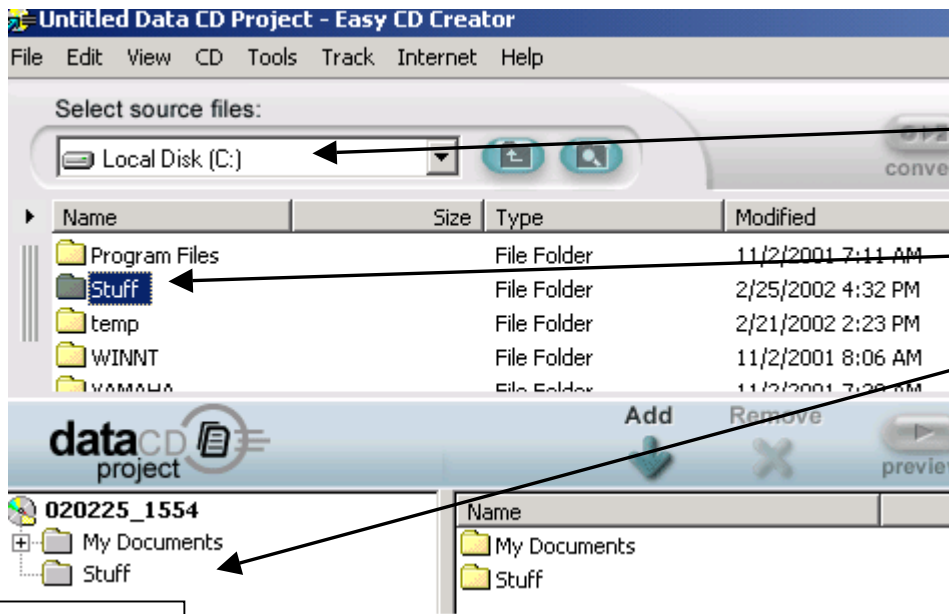
Project Size: 12 kb (Estimated free space: 650.4 MB on a 74 min CD, 703 MB on an 80 min CD)

How much space do you have on your CD?

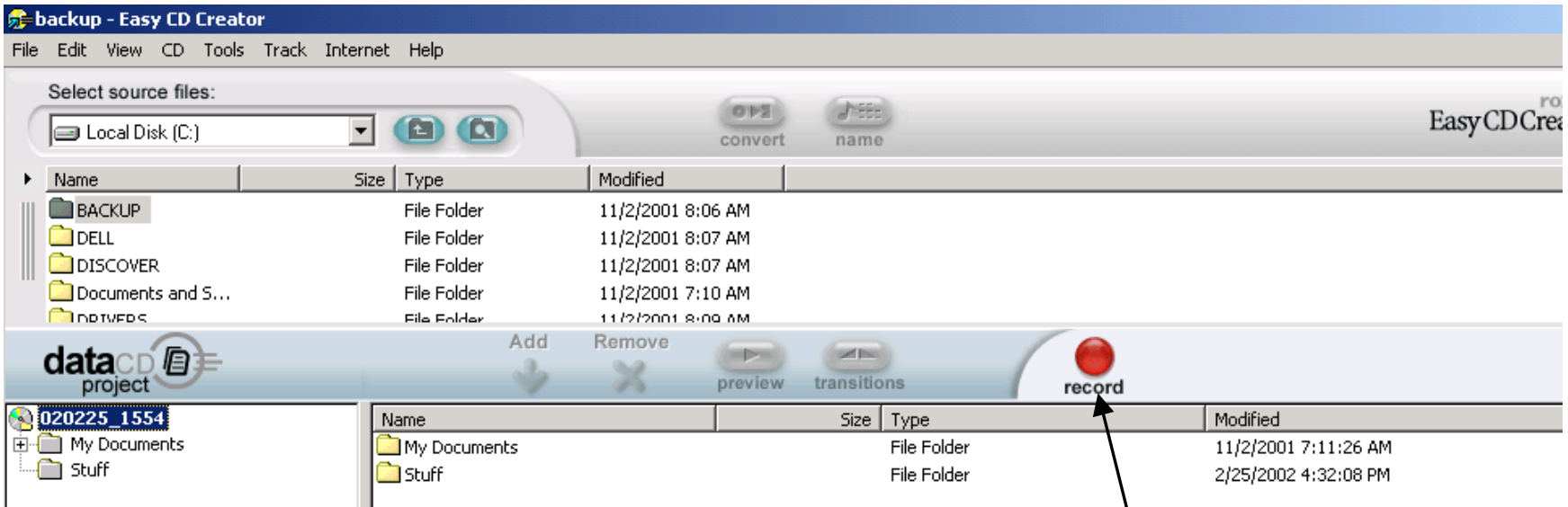
3. If you have file/folders listed directly under C: then:

Click the drop-down box and select C:. Select the file/folder and right-click and select **Add to CD Project**. You can select multiple folders/files by holding down the Control key and clicking the folders with you the left-mouse button OR if they are all in order hold down the Shift key click the first and then last then right-click and select **Add to CD Project**.

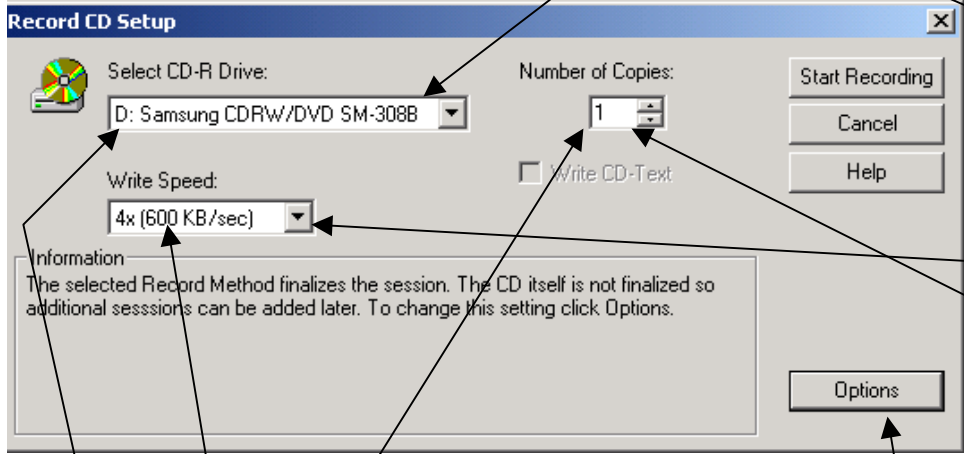
4. If you are finished creating your data CD then be sure to go to **File, Save Project List As**, name the file and click **Save**. (This is similar to creating a backup job with Backup Exec.) You can **Open CD Project** instead of doing this each time then add new folders and save it with the same name or create a new project list.



[Click for next steps](#)

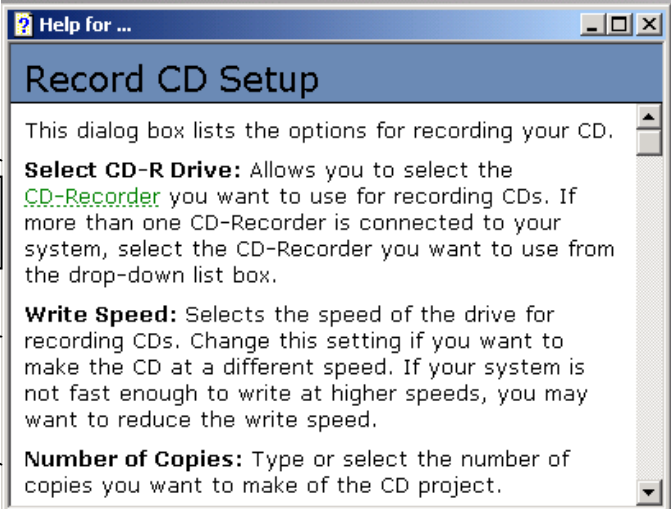


5. Click the **Record** button.



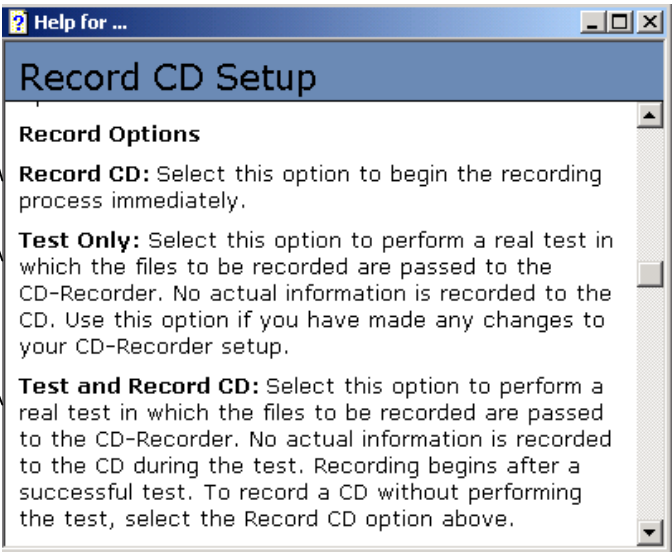
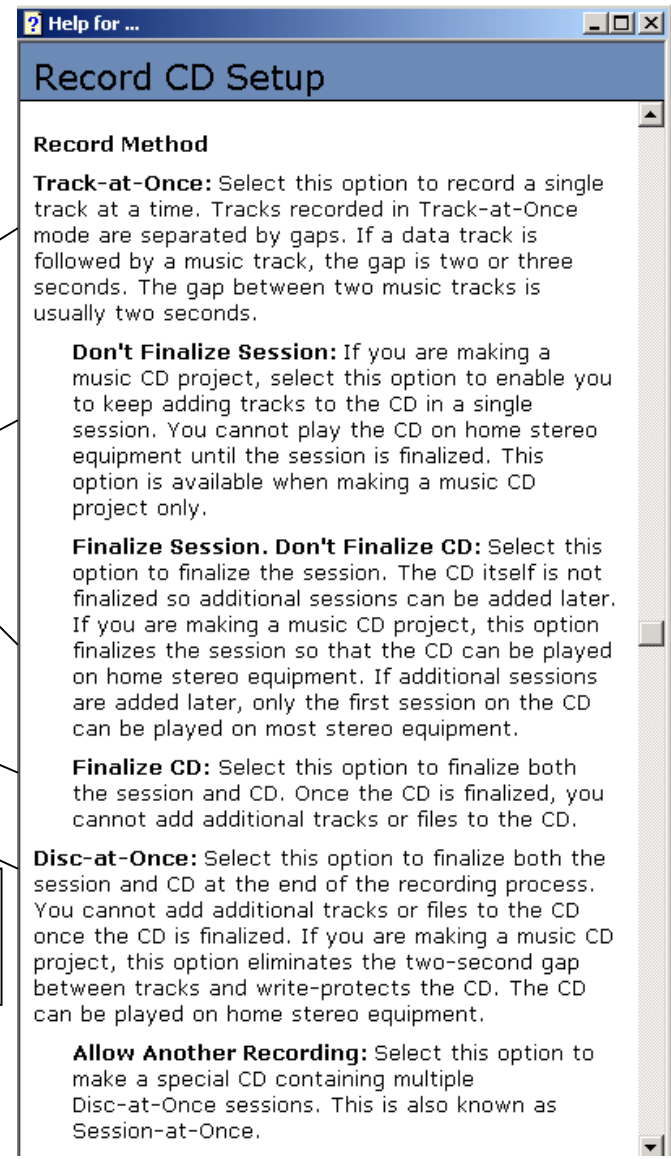
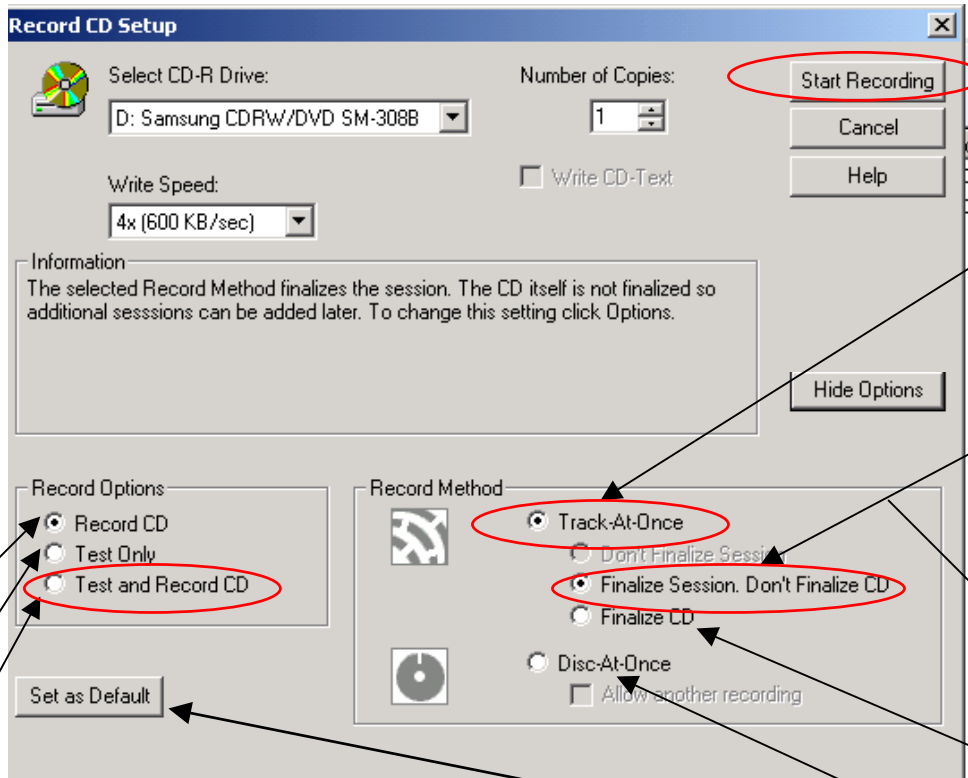
Leave as default

6. Click **Options**.  
(next slide)



Click Help if you need it.

[Click here for next steps](#)



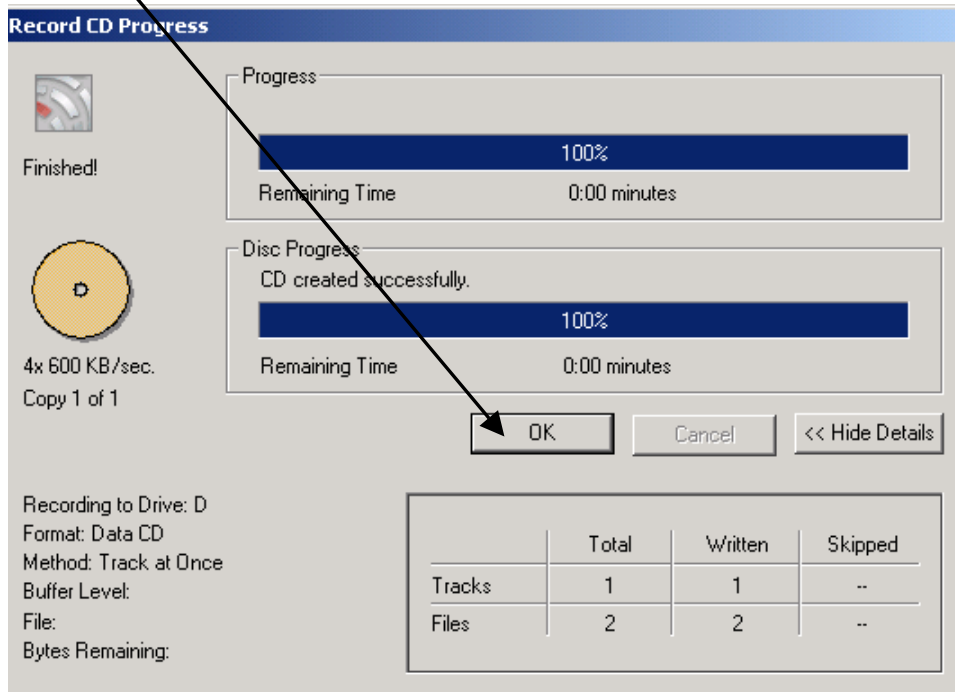
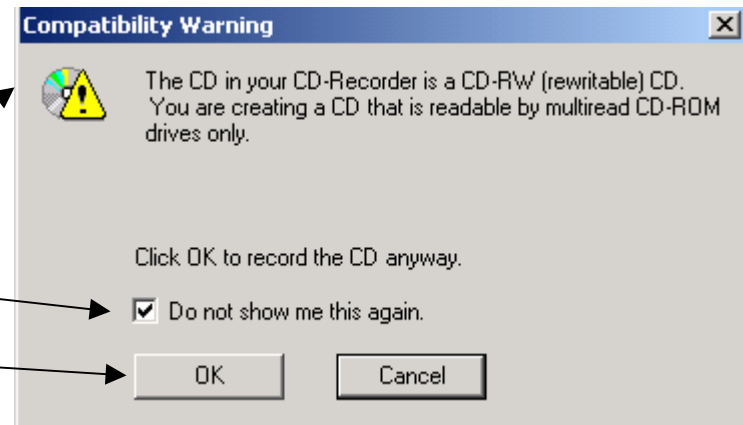
Click **Set as Default** if you want to make your changes the default settings.

7. Change **Record Options** to **Test and Record CD**, **Record Method** to **Track-At-Once**, **Finalize Session Don't Finalize CD**, then click **Start Recording**.

[Click for next steps](#)

9. Once the CD has been created, click **OK**.

8. This box will pop up. If you feel you need this reminder then click **OK**, otherwise check the box and click **OK**.



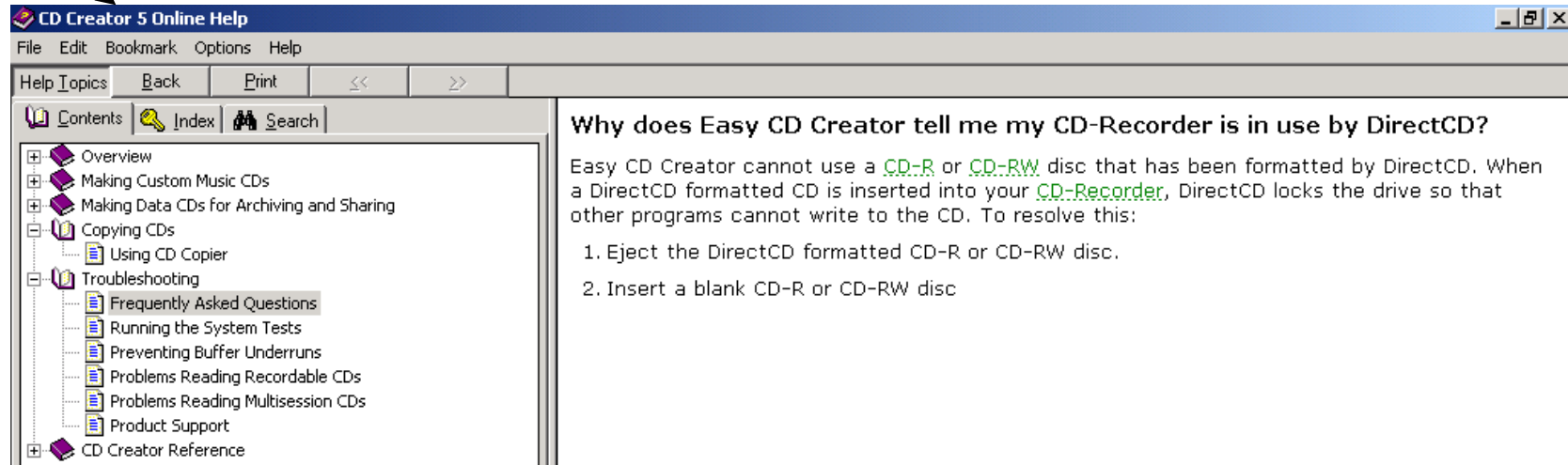
**You have  
successfully  
created a CD.  
Good job!**

*There are many ways to do this-  
I am just showing one way.*

[Click for next slide](#)

Help is always useful and answers most questions.

# FAQs



**CD Creator 5 Online Help**

File Edit Bookmark Options Help

Help Topics Back Print << >>

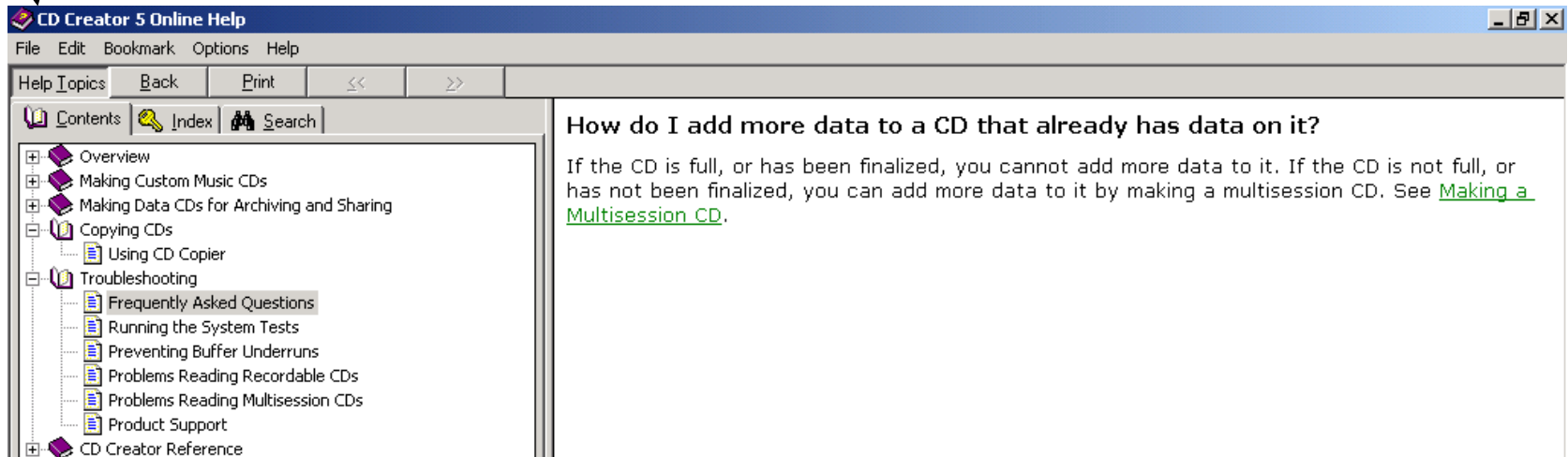
Contents Index Search

- Overview
- Making Custom Music CDs
- Making Data CDs for Archiving and Sharing
- Copying CDs
  - Using CD Copier
- Troubleshooting
  - Frequently Asked Questions**
  - Running the System Tests
  - Preventing Buffer Underruns
  - Problems Reading Recordable CDs
  - Problems Reading Multisession CDs
  - Product Support
- CD Creator Reference

### Why does Easy CD Creator tell me my CD-Recorder is in use by DirectCD?

Easy CD Creator cannot use a [CD-R](#) or [CD-RW](#) disc that has been formatted by DirectCD. When a DirectCD formatted CD is inserted into your [CD-Recorder](#), DirectCD locks the drive so that other programs cannot write to the CD. To resolve this:

1. Eject the DirectCD formatted CD-R or CD-RW disc.
2. Insert a blank CD-R or CD-RW disc



**CD Creator 5 Online Help**

File Edit Bookmark Options Help

Help Topics Back Print << >>

Contents Index Search

- Overview
- Making Custom Music CDs
- Making Data CDs for Archiving and Sharing
- Copying CDs
  - Using CD Copier
- Troubleshooting
  - Frequently Asked Questions**
  - Running the System Tests
  - Preventing Buffer Underruns
  - Problems Reading Recordable CDs
  - Problems Reading Multisession CDs
  - Product Support
- CD Creator Reference

### How do I add more data to a CD that already has data on it?

If the CD is full, or has been finalized, you cannot add more data to it. If the CD is not full, or has not been finalized, you can add more data to it by making a multisession CD. See [Making a Multisession CD](#).