



Richard Bland College Library
**Guide to Finding Resources on
Othello by William Shakespeare**

www.rbc.edu/library
804-862-6226
library@rbc.edu

RESERVES

Ask for Reserve materials at the Circulation Desk. When not on Reserve for ENG 102, these books can be found in the STACKS. (Annotations are meant to highlight specific content from each book and do not reflect all content contained within each book.)

Aristotle: Containing Selections from Seven of the Most Important Books of Aristotle (By Aristotle; translated by Phillip Wheelwright) *

Includes *The Art of Poetry (Poetics)* by Aristotle.

Aristotle: The Growth and Structure of His Thought (by G.E.R. Lloyd)

Includes an analysis of the Aristotelian definition of tragedy.

A History of Shakespeare on Screen: A Century of Film and Television (By Kenneth S. Rothwell)

Discusses film versions by/with Orson Welles, by Stuart Burge (starring Laurence Olivier), and by Oliver Parker (starring Laurence Fishburne), among others.

A Preface to Shakespeare's Tragedies (By Michael Mangan)

Includes Iago's villainy and racial tension.

Principles of Tragedy: A Rational Examination of the Tragic Concept in Life and Literature (By Geoffrey Breton)

Includes tragedy as a literary genre and an analysis of the Aristotelian definition of tragedy.

Shakespeare and His Sources (By Joseph Satin)

Discusses Shakespeare's source material.

Shakespeare and the Film (By Roger Manvell)

Discusses film versions by/with Orson Welles and also by Stuart Burge (starring Laurence Olivier).

Shakespeare on Film (By Jack J. Jorgens)

Discusses film versions by/with Orson Welles and also by Stuart Burge (starring Laurence Olivier).

Shakespeare Survey (Volume 39)

Discusses film version by/with Orson Welles.

Shakespeare: The Tragedies: A Collection of Critical Essays (Edited by Alfred Harbage)

Includes light & dark imagery and Iago's villainy.

Shakespeare: The Tragedies: A Collection of Critical Essays (Edited by Clifford Leech)

Includes Othello's tragic flaw.

Shakespeare: The Tragedies: New Perspectives (Edited by Robert B. Heilman)

Includes light & dark imagery.

Shakespearean Tragedy: Lectures on Hamlet, Othello, King Lear and Macbeth (by A.C. Bradley) *

Includes Othello's jealousy and tragic flaw, Iago's villainy, Iago & Emilia, Desdemona's personality, women in *Othello*, racial tension, and a discussion of Shakespearean tragedy.

Shakespeare's Tragic Heroes: Slaves of Passion (By Lily B. Campbell) *

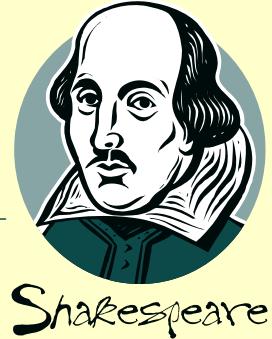
Includes Othello's jealousy and Iago's villainy.

The Sources of Shakespeare's Play (By Kenneth Muir)

Discusses Shakespeare's source material.

William Shakespeare's Othello (Edited by Harold Bloom)

Includes Othello's jealousy and tragic flaw, Iago's villainy, Iago & Emilia, Desdemona's personality, women in *Othello*, and racial tension.



* Additional copies of these titles can be found in the STACKS.

READY REFERENCE

Located on the first floor, these materials may be photocopied since they may not be checked out.

The Greenwood Companion to Shakespeare: A Comprehensive Guide for Students (By Joseph Rosenblum)
PR2976 .G739 2005 Vol.3

A Handbook to Literature (By C. Hugh Holman and William Harmon) **PN41 .H6 1992**

Shakespeare for Students : Critical Interpretations of As you like it, Hamlet, Julius Caesar, Macbeth, The merchant of Venice, A midsummer night's dream, Othello, and Romeo and Juliet (Edited by Mark W. Scott)
PR2987 .S47 1992

World Philosophers and Their Works (Edited by John K. Roth) **B104 .W67 2000 Vol.1**

SECONDARY SOURCES IN THE STACKS

- To look for books about your topic in the Library collection, use **LION** (the Library catalog).
- You may also want to browse the stacks using the following call numbers.

Aristotle and Poetics **B407, PA3893, PN1040**

Tragedy as a literary genre **PN1892**

Actor Laurence Olivier **PN2598 .O55**

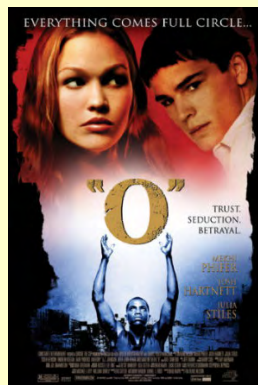
Shakespeare **PR 2750 - PR 3105**

ORDERING BOOKS FROM OTHER LIBRARIES THROUGH INTERLIBRARY LOAN (ILL)

- Begin at the RBC Library web page: www.rbc.edu/library.
- Select **"Articles and Books"** listed under RESEARCH.
- From the links at the top, select **"Books and Videorecordings."**
- Access **WorldCat** using the appropriate on- or off-campus link.
- Enter your search terms(s) such as: **Othello** (Subject) AND **Shakespeare** (Subject).
- Your results will be ranked by the number of libraries which own the item. Click the **"Libraries Worldwide"** link to verify that the book you are interested in is owned by an academic library in Virginia.
- Click the **ILL** (Interlibrary Loan) button to request that a copy of the book be shipped to RBC.
- A librarian will contact you when your book arrives! *Note that there is a \$5 overdue fine per day per late Interlibrary Loan book.*

FILM VERSIONS

Check the DVD/VHS display area for versions of *Othello* on film.



ACCESS LITERATURE RESOURCES FROM GALE DATABASE THROUGH VIVA

1. Begin at the library web page: www.rbc.edu/library. Select **Articles and Books** listed under RESEARCH.
2. Select **Article Databases from VIVA**.
3. Select **HUMANITIES**.
4. Select **Literature Resources from Gale**. Note that there are two links: an on-campus link and an off-campus link. *For the purposes of database access, students in the residence halls are considered off-campus.* Logging in when off-campus is similar to logging into Blackboard/email.

Searching in Literature Resources from Gale

Enter the title of your work in the 2nd text box and the name of the author in the 3rd text box.

Click **Search** to view the results.

Viewing the results in *Literature Resources from Gale*

Click on the large tabs to access different types of information pertaining to the author and work. With the exception of resources in the *MLA International Bibliography* section, full-text is available.

The screenshot shows the 'Literature Resources from Gale' website interface. At the top, there are navigation tabs: 'Basic Search', 'Advanced Search', 'Person Search', 'Works Search', 'MLA International Bibliography', and 'Gale Literary Index'. The main search area displays results for 'Advanced Search WO (othello) And PZ (shakespeare)'. On the left, a search box contains 'desdemona' and a 'GO' button. Below the search box, there are options to narrow results by 'Subjects' and a limit of 25, 50, or 100. A list of subjects is shown, including 'Shakespeare, William... (200)', 'Othello (Play) (164)', 'Elizabethan drama (69)', 'Othello (Fictional c... (14)', 'Playwrights (10)', 'English literature... (8)', 'Iago (Othello) (Fict... (7)', 'Racism (7)', 'Desdemona (Othello)... (6)', 'Tragedies (Drama) (6)', 'Jealousy (5)', and 'Soliloquy (2)'. The main results area shows two entries, 21 and 22, both with 'Full-text' links circled in red. Entry 21 is 'Iago the Psychopath' by Fred West, and entry 22 is 'The Silence of Iago' by Daniel Stempel. Both entries are marked as 'Critical essay' and '67% relevant'. A yellow box next to each entry says 'Full-text is available!'. Red arrows point from the top text to the search box and the 'Full-text' links.

SEARCH TIP!

You can enter additional search terms to further narrow your search. For instance, if you were writing a paper on Desdemona, you could type *desdemona* in the **Search...within these results** box. Note that you have to apply this technique within each tabbed section. Then click **GO**.

RESEARCH HELP

- Librarians can assist you with your research and MLA citations.
- Consult the Library web page for a guide to MLA style: http://www.rbc.edu/library/CitationGuides/mla_pdf.pdf.
- The Writing Center (located in Humanities) is also available to help you with your paper!