

Why RBC



Richard Bland College
of WILLIAM & MARY

Quick Guide



- **48-HOUR ACCEPTANCE DECISION**
- **NO BIG COLLEGE DEBT**
- **FREE APPLICATION**
- **JUMPSTART YOUR COLLEGE CAREER**



Apply Now
rbc.edu



Richard Bland College

of WILLIAM & MARY

Is a selective, residential, two-year college offering academically rigorous programs, experiential learning opportunities, up to 80% financial assistance for high-performing students, and intercollegiate athletics. The College's Guided Pathways for Success(GPS@RBC) program provides each student with a dedicated Learner Mentor to keep them on track to graduate. RBC professors are ranked among the best in the region, with 76% of instruction delivered by full-time faculty. The College boasts a small and diverse student population on a picturesque 750-acre campus located 30 minutes south of Richmond, Virginia.

Programs & DEGREES

Students must complete 60 credit hours to earn an Associate Degree at RBC.

ASSOCIATE OF ARTS (A.A.)

Arts, Humanities, Behavioral & Social Sciences

ASSOCIATE OF SCIENCE (A.S.)

Education, Business, Health Professions, Social Work, Engineering, One of the Natural Sciences

- A.S. - BEHAVIORAL SCIENCES
- A.S. - BUSINESS ADMINISTRATION
- A.S. - MATH/COMPUTER SCIENCE
- A.S. - PHYSICAL SCIENCE
- A.S. - LIFE SCIENCE
- A.S. - CLINICAL LAB SCIENCES

CERTIFICATES

Logistics
Communications
Fine Arts



APPLY NOW!

HIGH SCHOOL
(DIPLOMA)

RICHARD BLAND
YEARS 1 + 2
(ASSOCIATE DEGREE)

TRANSFER TO UNIVERSITY
YEARS 3 + 4
(BACHELOR DEGREE)

Guided Pathways for SUCCESS GPS@RBC

Focuses on the College's commitment to 100% student success by providing wrap-around support and a one-size-fits-one solution for students.

- Dedicated Learner Mentors are available to advise and assist them through graduation
- Students are provided supplemental support for coursework, academic and career planning
- Students' academic progress is monitored with improvement plans developed as needed



PROGRAMS & Scholarship Opportunities

STATESMAN SCHOLARS



Scholarships are based on a student's cumulative high school GPA and overall Expected Family Contribution (EFC) as determined by FAFSA.

- Students with a 3.0 high school GPA
- Enrolled full-time (15 credit hours per semester)
- Completed FAFSA and submit all required verification documents
 - Virginia resident
 - First-come, first-served basis

ADVANCED MANUFACTURING VA FAME



The Central VA Federation for Advanced Manufacturing Education (FAME) Advanced Manufacturing Technician (AMT) program prepares students for a rewarding career in a high-demand field.

Combines college coursework with paid, on-the-job training and experience, as well as personal behaviors and core manufacturing skills desired by manufacturers.

HONORS SCHOLARS



For students with at least a 3.5+ high school GPA. Enrolled in ESE-Honors and required number of Honors courses.

- Maintain a 3.25+ cumulative GPA
- Participate in events and service-learning opportunities
- \$500 per semester stipend

PROMISE SCHOLARS



A joint initiative between Richard Bland College AND William & Mary designed to reduce financial barriers by guaranteeing 80% coverage of direct costs (tuition, fees, room and board).

- High-ability Virginia resident with a 3.5+ high school GPA or 3.25 college GPA (some exceptions made for GPA)
- PELL eligible (FAFSA required)
- Desire to attend William & Mary
- Completion of two years of coursework at RBC with an Associate Degree
- Residential student



Through the generous gifts of donors, RBC is able to offer over 50 endowed scholarships to over 100 new and returning students each year.

ENDOWED SCHOLARSHIPS

Earn while you learn



PARTNERSHIPS

AMPAC FINE CHEMICALS
 AMSTED RAIL
 BLUEPRINT AUTOMATION
 CIVICA
 COESIA
 CP&P
 JEWETT AUTOMATION
 HEYCO

OSG
 EPT CONNECTORS
 NIAGARA BOTTLING, LLC
 PHLOW
 PHILIP MORRIS
 SABRA
 SUPERRADIATOR COILS

"Richard Bland College provides me the opportunity to quickly get the credentials I need to pursue my career through flexible hybrid academic programs designed to complement my lifestyle. And best of all, with the many scholarships available, I can finish with little to no big college debt!"

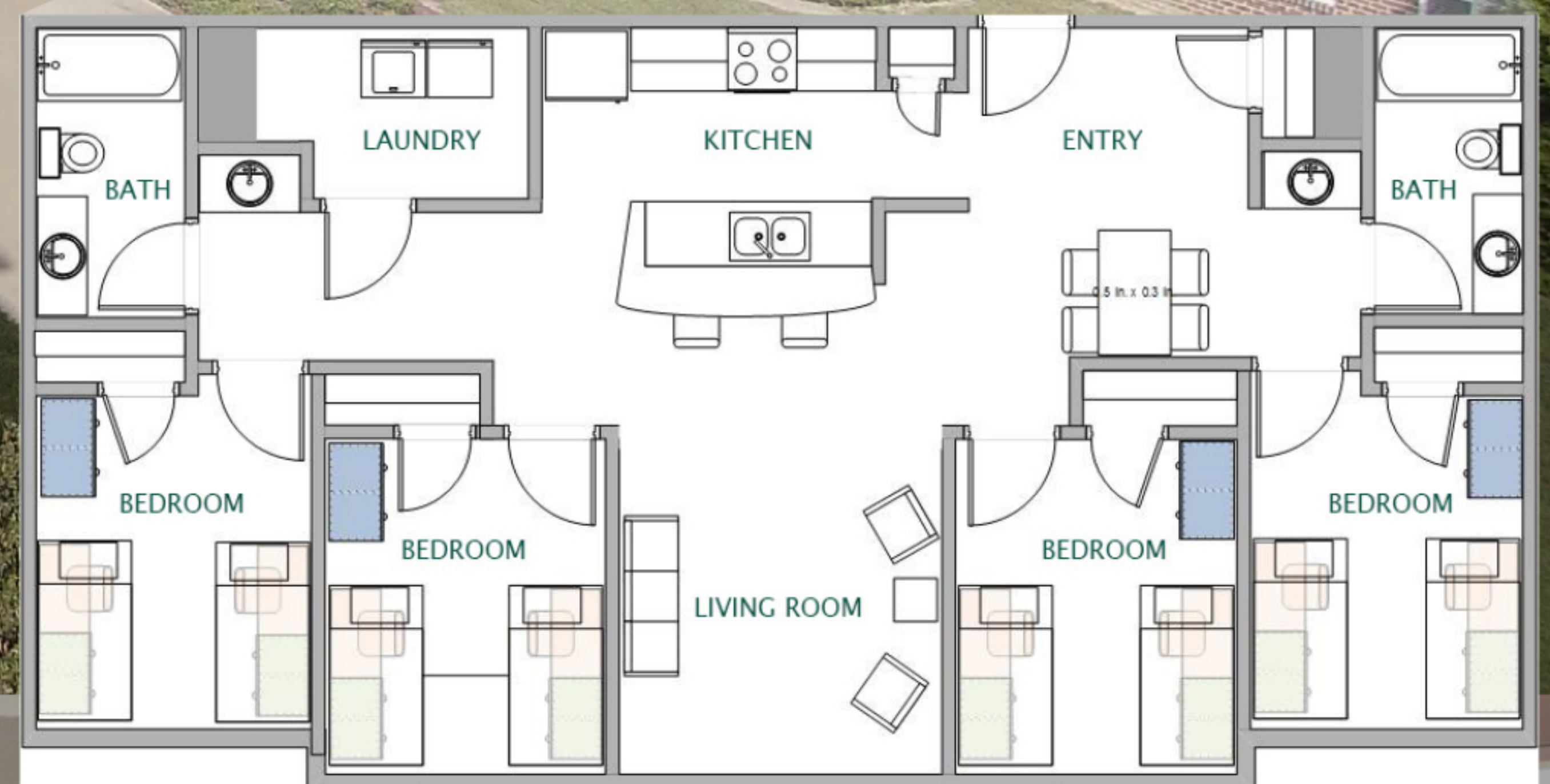


Richard Bland College
of WILLIAM & MARY

Residence Life & Housing

APARTMENT STYLE LIVING

- Bed, dresser, closet
- Living room, table, chairs
- Fully-equipped kitchen: refrigerator, microwave, stove, oven
- Bathroom(s)
- Washer, dryer
- Cable TV, internet
- Computer labs, game lounges
- Single, double occupancy rooms



Live Where You Learn!

“Through the dorm experience, we have created unforgettable memories outside the classroom that have enabled us to create tight bonds and make long-lasting memories with our suitemates.”



SCHEDULE AN
IN-PERSON VISIT



WATCH THE
RBC WELCOME VIDEO



At a GLANCE

1960 ESTABLISHED AS A DIVISION OF WILLIAM & MARY

24:1 STUDENT TO FACULTY RATIO

76% CLASSES TAUGHT BY FULL-TIME PROFESSORS

71% ADMISSION RATE

2,255 2022 STUDENT POPULATION INCLUDING DUAL ENROLLMENT

\$7M FINANCIAL ASSISTANCE AWARDED IN SCHOLARSHIPS, GRANTS, & LOANS

18,000 ALUMNI WORLDWIDE

COURSES ACCEPTED
THROUGHOUT THE U.S.

AFFORDABLE
FOR BOTH RESIDENTIAL & COMMUTER STUDENTS

TRANSFER AGREEMENTS
35+
WITH VIRGINIA COLLEGES & UNIVERSITIES



CLUBS & STUDENT ORGANIZATIONS

NJCAA DIVISION I & II ATHLETICS

MEN'S BASKETBALL
MEN'S SOCCER
MEN'S BASEBALL
WOMEN'S SOFTBALL
WOMEN'S BEACH VOLLEYBALL



WOMEN'S VOLLEYBALL
WOMEN'S BASKETBALL
WOMEN'S CROSS COUNTRY
WOMEN'S SOCCER
WOMEN'S TRACK AND FIELD

2022-23 COSTS PER YEAR

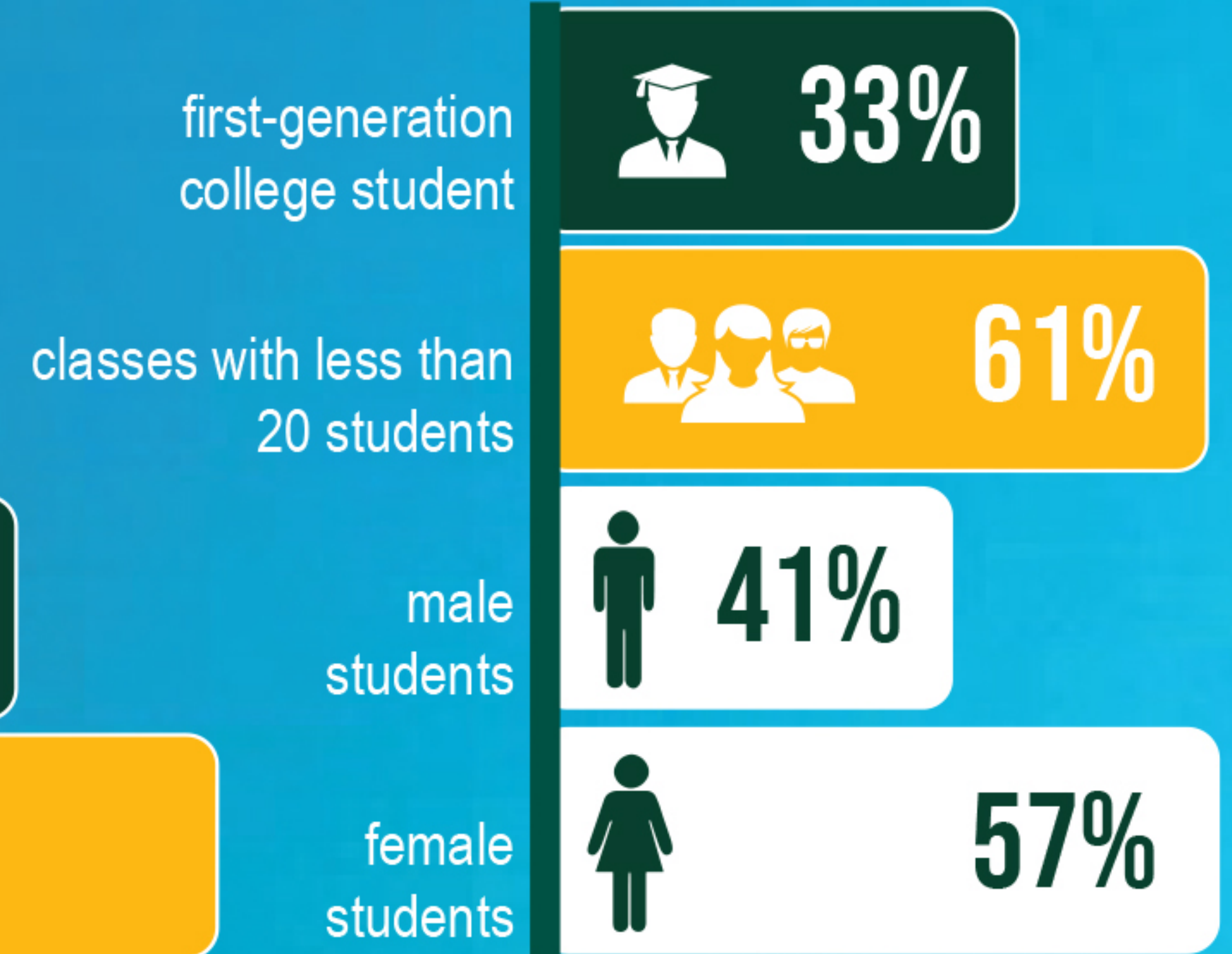
	TUITION & FEES	ROOM & BOARD	TOTAL
IN STATE	\$8,850	\$10,039	\$18,889
OUT OF STATE	\$14,910	\$10,039	\$24,949
INTERNATIONAL	\$22,260	\$10,039	\$32,299



RBC.EDU



VIRGINIA'S LARGEST & OLDEST PECAN GROVE





Richard Bland College of WILLIAM & MARY

ADMISSIONS

- 11301 Johnson Road, South Prince George, VA 23805
- (804) 862-6249
- Apply@rbc.edu

CAMPUS VISIT

- [Apply.rbc.edu/visitcampus](https://apply.rbc.edu/visitcampus)

APPLY

- [Apply.rbc.edu/apply](https://apply.rbc.edu/apply)
- [Apply.rbc.edu/upload](https://apply.rbc.edu/upload)

FINANCIAL AID

- (804) 862-6260
- Financialaid@rbc.edu
- [Apply.rbc.edu/finaid](https://apply.rbc.edu/finaid)

SOCIAL

- facebook.com/richardblandcollege (College)
- facebook.com/rbcstatesmen (Athletics)
- @rbcstatesmen (College)
- @gorbcstatesmen (Athletics)
- @rbcstatesmen (College)
- @rbcadmissions (Admissions)
- @gorbcstatesmen (Athletics)
- @rbc_reslife (Residence Life)



APPLY NOW!

SAT CODE: 5574
 ACT CODE: 4346
 FAFSA CODE: 003707



Get started today!



SCHEDULE

in-person, virtual visit, or phone call
with an admissions counselor.



**WATCH THE
RBC WELCOME VIDEO**